



Michele Detwiler

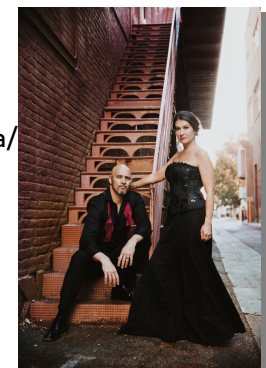
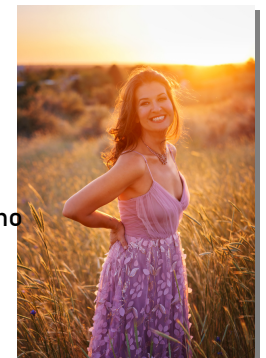
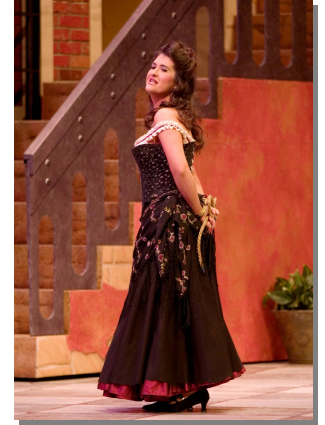
mezzo-soprano

Randsman Artists Management

212.290.2281

randsman@aol.com

www.randsman.com



Role	Opera	Venue(s)
Angelina	La cenerentola	Opera San Jose
Anne	Sherlock Holmes	Opera Modesto
Annina	La traviata	MidAtlantic Opera
Augusta	The Ballad of Baby Doe	Opera Idaho
Carmen	Carmen	Mission City Opera/Opera San Jose/ Gemma Arts
Cherubino	Le nozze di Figaro	Gemma Arts/Stockton Opera/ Opera San Jose
Dinah	Trouble in Tahiti	Opera Idaho
Dorabella	Così fan tutte	Gemma Arts/Opera San Jose
Dritte Dame	Die Zauberflöte	Apollo Sierra Opera/Opera San Jose Opera Idaho
Elizabeth Proctor	The Crucible	Opera San Jose
Eunice	Streetcar Named Desire	Opera Idaho
Flora	La traviata	MidAtlantic Opera/Opera San Jose
Gertrude	Roméo et Juliette	Opera Idaho
Jade Boucher	Dead Man Walking	Opera Idaho
Javotte	Manon	Taconic Opera/Opera Idaho
La Ciesca	Gianni Schicchi	Stockton Opera
Madama Quickly	Falstaff	Opera Modesto (2025)
Maddalena	Rigoletto	Opera Idaho
Mary	Der fliegende Holländer	Opera San Jose
Mother	Hansel and Gretel	Opera Idaho
Orlofsky	Die Fledermaus	Mississippi Opera/Opera San Jose/Opera Idaho
Preziosilla	La forza del destino	West Bay Opera
La Principessa	Suor Angelica	Opera Idaho
Rosette	Manon	Opera Idaho
Rosina	Il barbiere di Siviglia	NW Florida Symp Orch/Opera San Jose
Santuzza	Cavalleria rusticana	Opera San Jose
Siebel	Faust	Opera Coeur d'Alene/Opera Idaho/ Opera San Jose
Stephano	Romeo et Juliette	Opera San Jose
Suzuki	Madama Butterfly	Livermore Valley Opera (2)/MidAtlantic Opera/ Opera Idaho/Opera San Jose (2)
Ulrica	Un ballo in maschera	Opera San Jose
Zerlina	Don Giovanni	Opera San Jose
Zita	Gianni Schicchi	Opera Idaho

Musical Theatre / Concert

Role	Title	Venue
Anna	The King & I (<i>R&H</i>)	Opera Idaho
Bloody Mary	South Pacific (<i>R&H</i>)	Opera Idaho
Soloist	Bach, <i>Cantata 54</i>	Boise State Chamber Ens.
	Beethoven, <i>9th Symphony</i>	Boise Philharmonic
	Berlioz, <i>Roméo et Juliette</i>	Boise Philharmonic
	Bernstein, <i>Candide Suite</i>	Boise Philharmonic
	Einhorn, <i>Voices of Light</i>	Boise Philharmonic
	Handel, <i>Messiah</i>	Boise Philharmonic/Boise Master Chorale/ Auburn Symphony
	Haydn, <i>Creation</i>	Boise Baroque
	Herzogenberg, <i>Die Geburt Christi</i>	Boise Master Chorale
	Mahler, <i>2nd Symphony</i>	Boise Philharmonic
	Mahler, <i>Das Knaben Wunderhorn</i>	Boise Wind Quintet
	Mahler, <i>Lieder eines fahrenden Gesellen</i>	CSU, Sacramento Orchestra
	Mendelssohn, <i>Elijah</i>	Idaho State Civic Symphony
	Mozart, <i>Requiem</i>	Symphony Silicon Valley/College of Idaho
	Pergolesi, <i>Stabat Mater</i>	Narnia Festival/Gemma Arts
	Saint-Säens, <i>Christmas Oratorio</i>	Jackson Community Orchestra
	Vivaldi, <i>Gloria</i>	Boise Baroque



Biography

Ms. Detwiler has sung over thirty roles with regional companies in the United States, favoring Mahler, Strauss, Bel Canto and French repertoire. Critics have described her instrument as "amber-voiced", "a velvety mezzo soprano voice with excellent range", with performances being cited as "riveting" and holding "center stage commandingly".

She has performed over a dozen characters with Opera Idaho, most recently as **La Principessa/Zita** (*Suor Angelica/Gianni Schicchi*). Last season, she returned to the Narnia Festival in Italy to lead the Emerging Artist Program and made her debuts with Mississippi Opera as **Orlofsky** and Opera Modesto as **Anne** (Meier's *Sherlock Holmes: The Case of the Fallen Giant*). Next spring sees her role debut as **Madama Quickly** in Opera Modesto's *Falstaff*.

In addition, the mezzo has sung with Sacramento Opera, MidAtlantic Opera, West Bay Opera, San Francisco Lyric Opera, Mission City Opera, the Boise Philharmonic and Master Chorale, Northwest Florida Symphony Orchestra, Auburn Symphony, Boise Baroque and Symphony Silicon Valley as well as guest and resident artist for several years with Opera San Jose.

Her concert credits include soloist in Haydn's *Creation*, Mendelssohn's *Elijah*, Handel's *Messiah*, Mozart's *Requiem*, Saint-Säens' *Christmas Oratorio*, Mahler's *Songs of a Wayfarer* and *2nd Symphony*, Beethoven's *9th Symphony*, Pergolesi's *Stabat Mater*, Herzogenberg's *Die Geburt Christi*, Einhorn's *Voices of Light*, and her favorite **Old Lady** in Bernstein's *Candide Suite*, as well as numerous Bach cantatas.

She and her husband, baritone Jason Detwiler live in Idaho, while studying with NYC teacher, Andrea DelGiudice and is managed by Peter Randsman.

www.micheledetwiler.com ~ mezzo@micheledetwiler.com